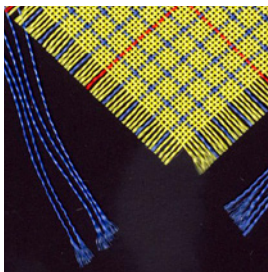


# FRAYING FABRIC<sup>+</sup>

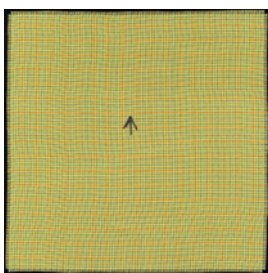
For the Assessment of “Mechanical Action” in Washing and Tumble Dry Processes

This fabric allows to measure the “Mechanical Action” in washing processes simply by counting the threads remaining in this fabric during a washing process. It is usable for all single wash processes in household washing machines (20 °C to 85 °C) and also for multiple washes on the lower end of mechanical action (as in wool-, hand- and easy care washing programs). It also can be used for single household tumble dry processes.

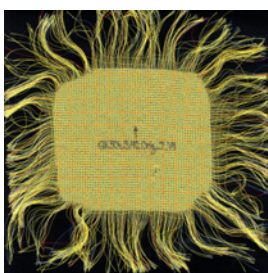
**article 304**  
100 % polyamide



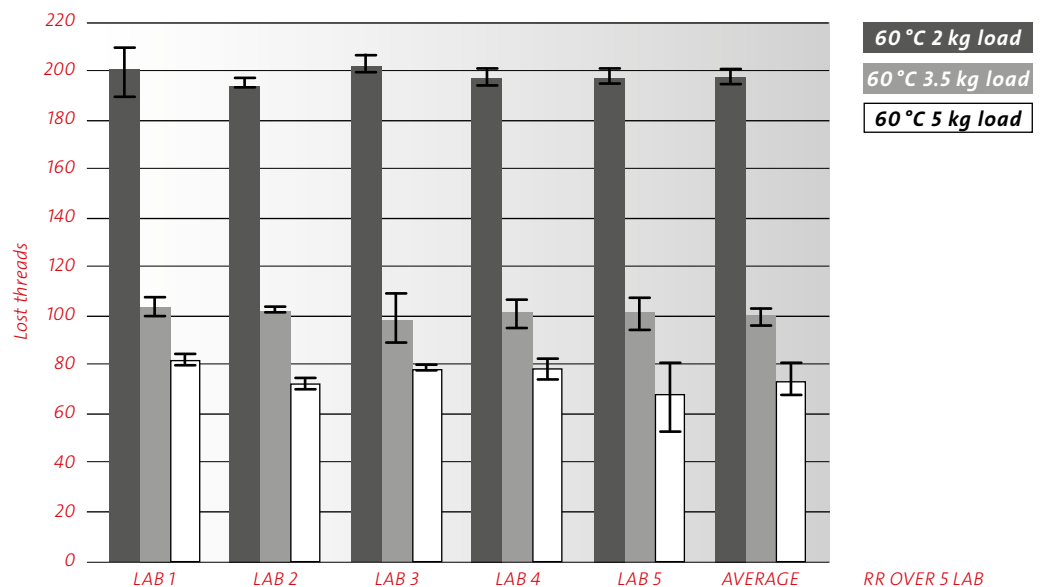
before washing



after washing



## Influence of the load size to the mechanical action cloth in a household washing machine:



## Influence of temperature, long and short cycles to the mechanical action cloth in a household washing machine:

